

# AGING WELL: WORKING WITH A CARE MANAGER

Lisa Mayfield  
Founder, Principal  
Aging Wisdom



## **What we will cover today:**

- 1) What are care managers
- 2) What do they do
- 3) When might you use one
- 4) How to find a care manager
- 5) Costs to expect
- 6) Process if you hire a care manager
- 7) Other community resources

# Who are Aging Life Care Professionals®?



Credentialed, experienced professionals skilled in providing personalized decision-making and support with a long view perspective for elders and persons with disability



Aging Life Care Professionals are the best at what they do, adhering to a strict Code of Ethics & Standards of Practice which is continually reviewed



Knowledgeable in the following 8 core areas of expertise needed to help older adults or persons with disabilities and their families to live well

# 8 Core Knowledge Areas

**ALCA**  
**8**  
knowledge  
areas



**AGING (i)fe CARE<sup>®</sup>**  
ASSOCIATION



# Services Care Managers Provide

Consultations

Assessments

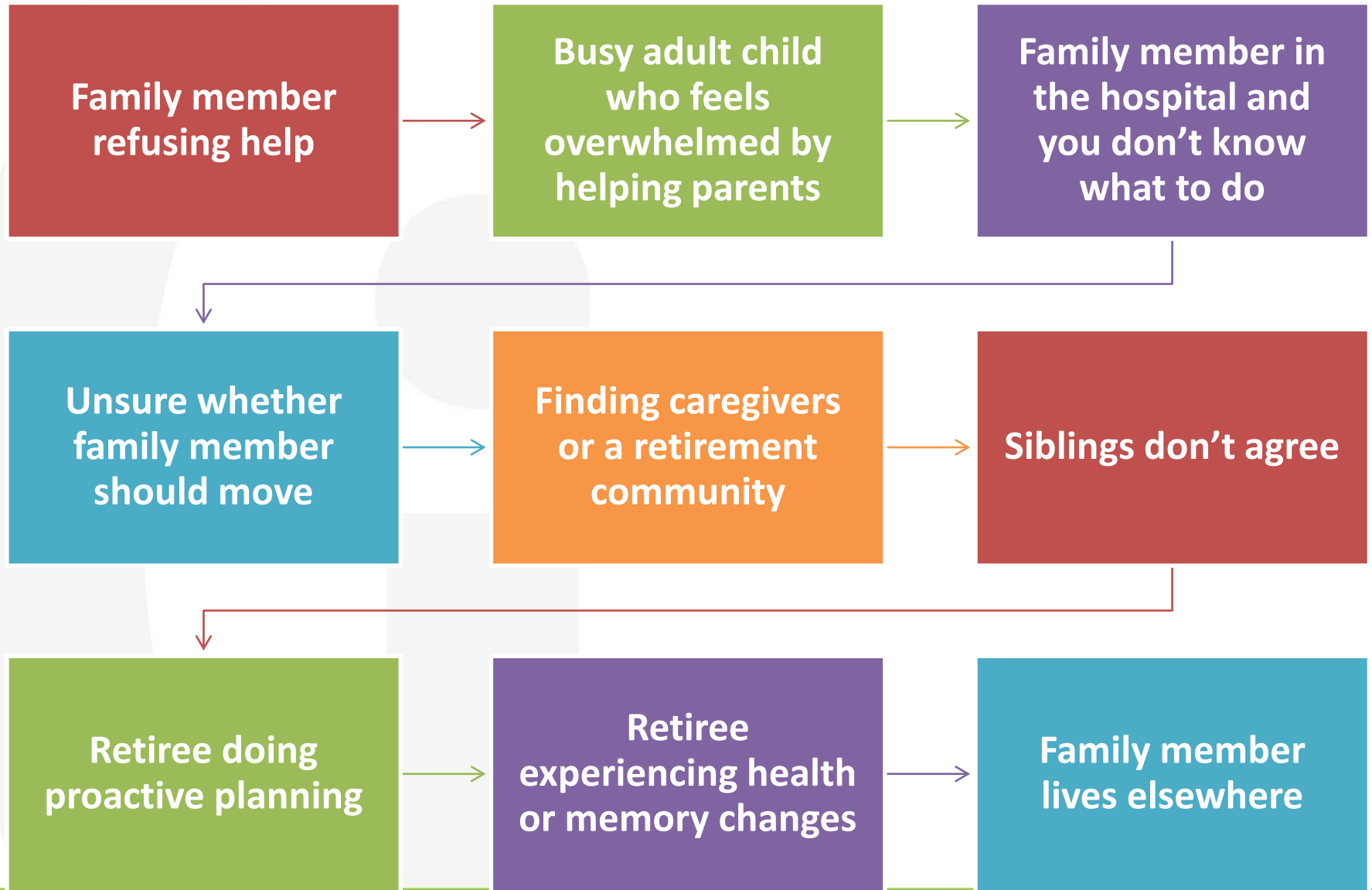
Discharge  
planning

Medical  
Coordination

Ongoing  
oversight

Family  
Support

# When an Aging Life Care Professional Can Be Valuable



A decorative graphic consisting of several circles of various colors (orange, green, purple, red, blue) scattered around the central text. The circles vary in size and are arranged in a roughly circular pattern around the words "Costs to expect".

# Costs to expect



FIND AN AGING LIFE CARE EXPERT

**AGING (i)fe CARE**®  
A S S O C I A T I O N

*The experts in aging well.*

[aginglifecare.org](http://aginglifecare.org)





# Other Resources

Primary Care Provider

Senior Center

Alzheimer's Association ([www.alz.org](http://www.alz.org))

Sound Generations ([www.soundgenerations.org](http://www.soundgenerations.org))

Elder Law Attorneys ([www.naela.org](http://www.naela.org))



# Questions?





# aging wisdom<sup>®</sup>

Lisa Mayfield



Nicole Amico-Kane



Wendy Nathan



Kayleigh Creighton



Sheila McKannay



Tami Sandygren



Aging Wisdom |  
[agingwisdom.com](http://agingwisdom.com) | 206.456.5155