

WELCOME



Two Artists' Journeys with Pottery and Sculpture

Collin White, sculptor

Josh Benditt, potter

Tom Griffin, moderator

Thank you for your patience as we allow time for attendees to join.

The presentation will begin shortly.

Adventur es in stone sculpting





The yardwork in my Mill Creek backyard
that started it all!

Uncommon smaller stones initially found that I tumbled or hand sanded which made me look at larger stones and then sculpt.



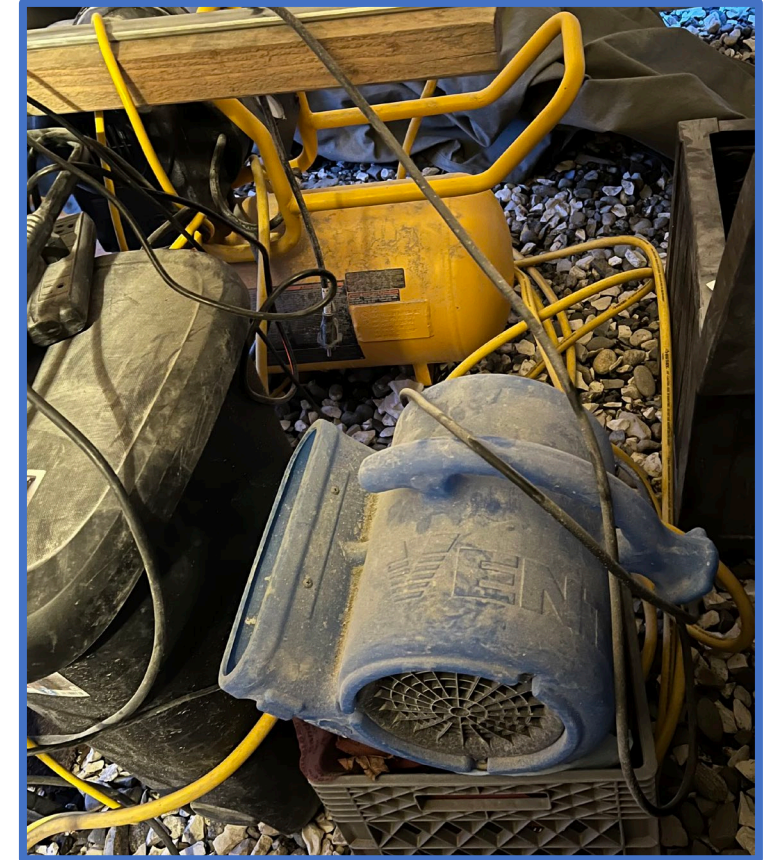
After finding larger stones in the backyard. Self teaching
myself to sculpt stone
1st tool I bought- Wet diamond blade tile saw



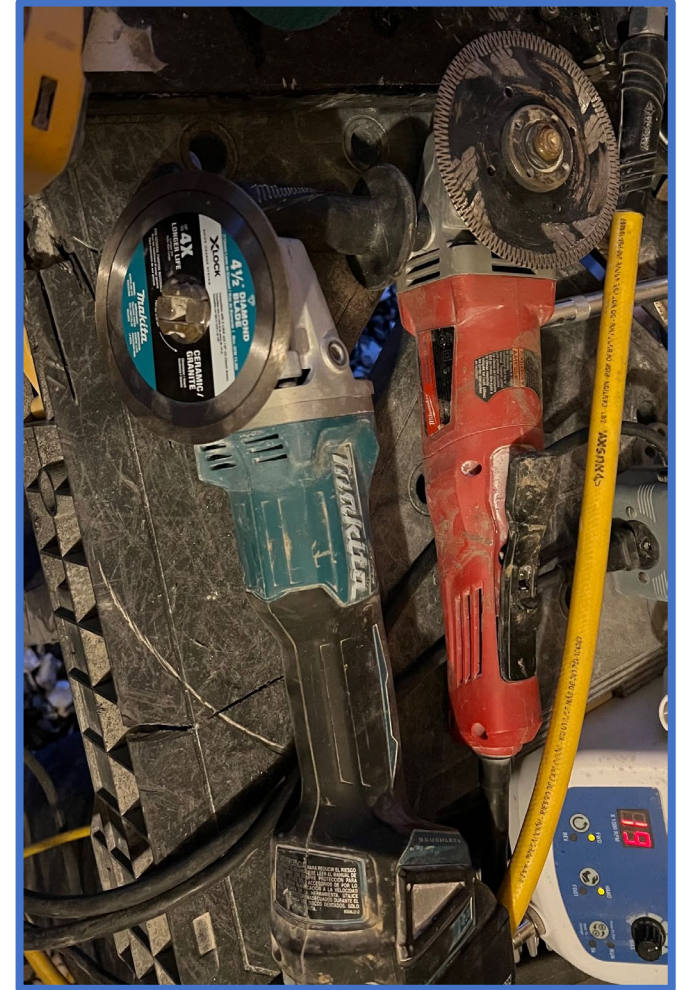
Guitar! (cut from assorted smaller stones in the backyard)



Some of the tools of the trade for 3D sculpting and safety



Electric angle grinders with diamond blades, grinding wheels and sandpaper discs



Pneumatic grinder, buffer and sander and dremel tool



Hand Sanding and Buffing!!!



The process of sculpting after choosing stone to work

- Rough Cut- Taking off loose rock and shaping with diamond blade and angle grinder.
- Grinding and smoothing and beveling with grinding wheel.
- Disc sanding and hand sanding.
- Buffing and polishing with buffing compound and color enhancer.



Product before and after

A few examples of my abstract art



My 1st sculpture- Ode to Stonehenge! Ancient Temple...



Swirly with floating discs! A play on photography!



Nelly the abstract Mastodon and Aves (Jade)



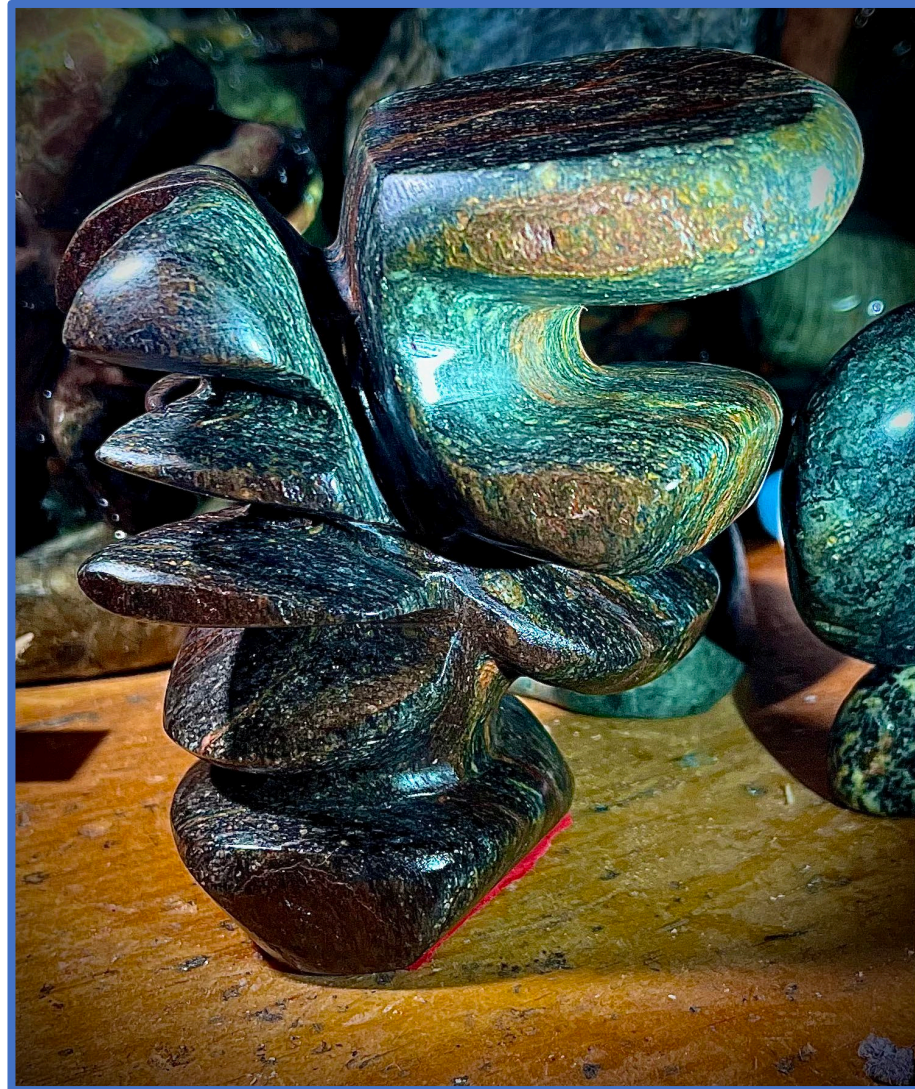
Meditation (opalized pet wood)



Passionate entanglement! (red jasper)



Petrified opalized wood abstract



Surrealistic R2D2 (Washington Jade)



The Cosmos!



Gathered for a night on the town!



Stone Sculptures from the Puget Sound,
Skykomish and Tolt river and Java!

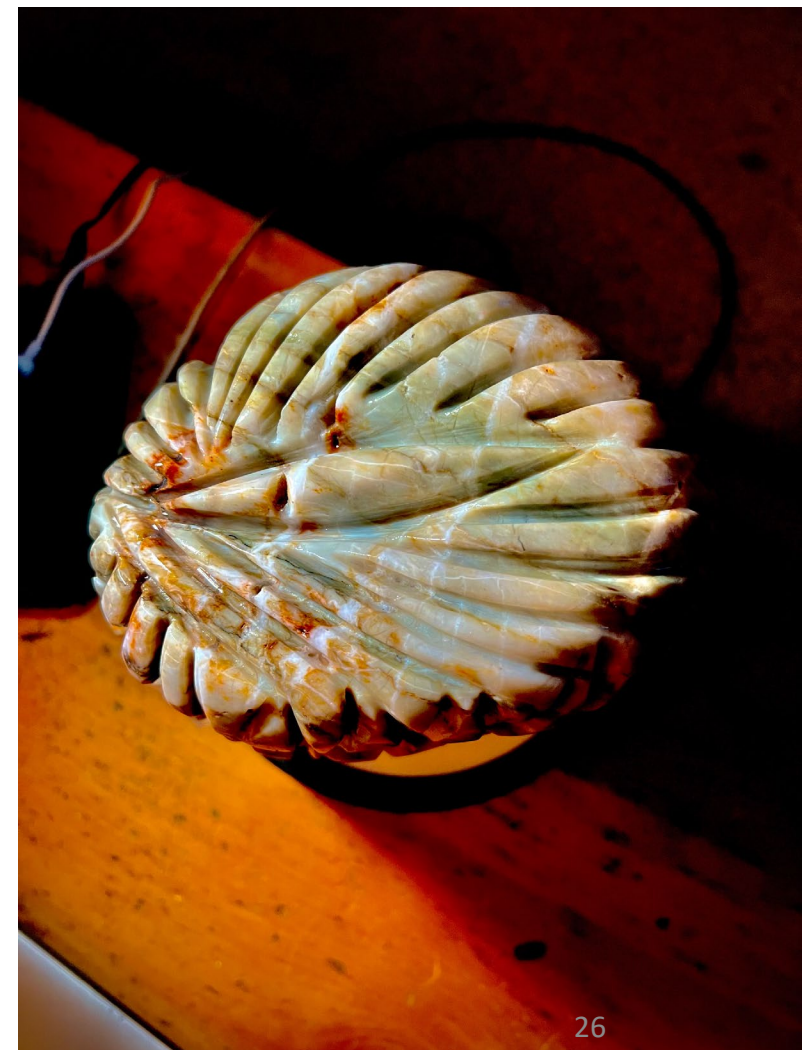
The abstract heart! (red jasper)



Orangutan



The Eye



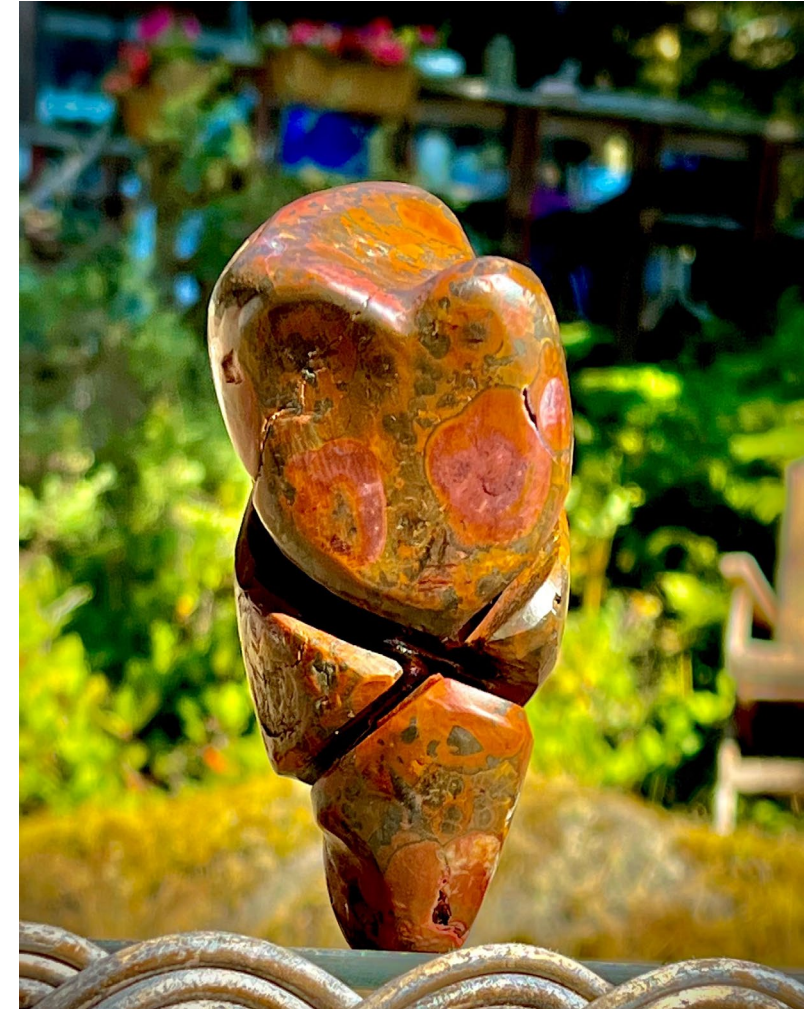
Latest- Ocean Jasper from Java Indonesia



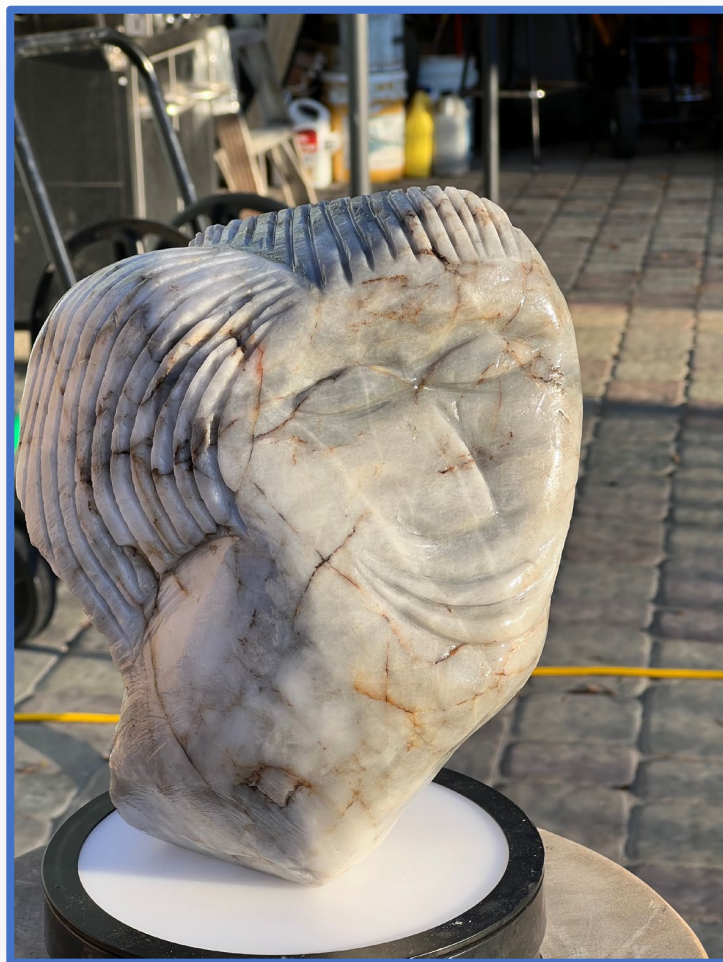
Characters!!



More Characters



More characters



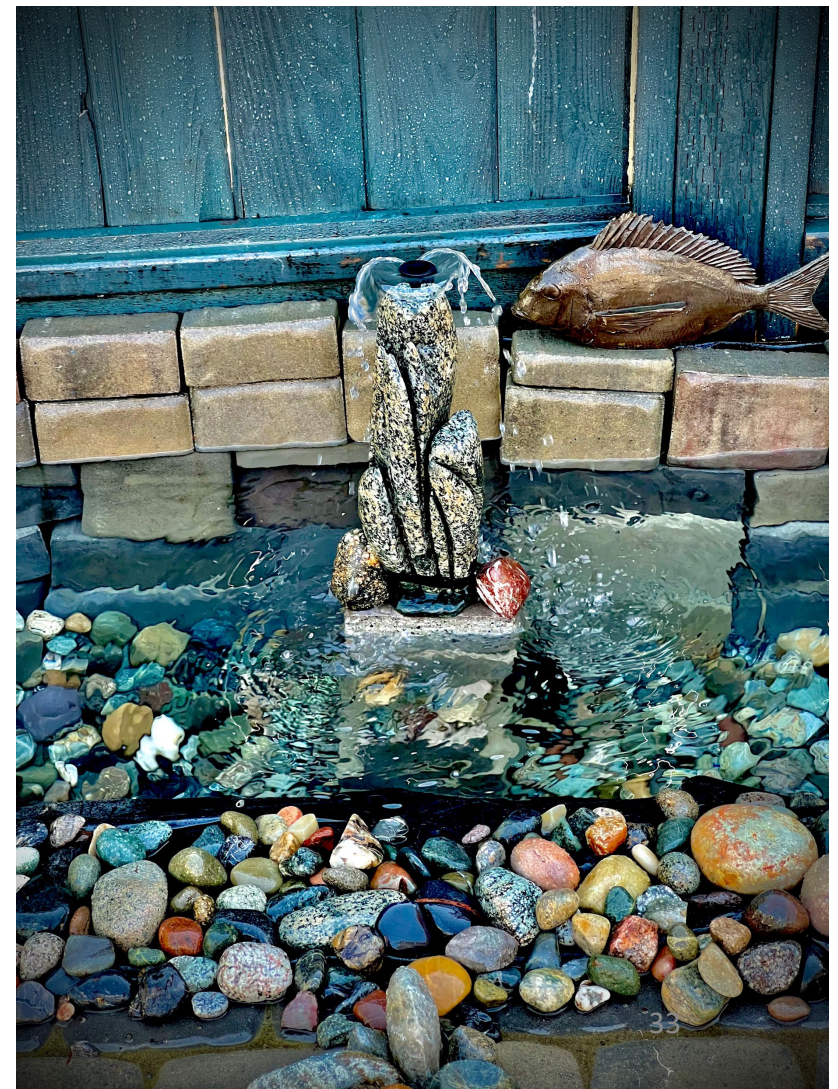
Integrating Driftwood (Lopez,WA) and Stone



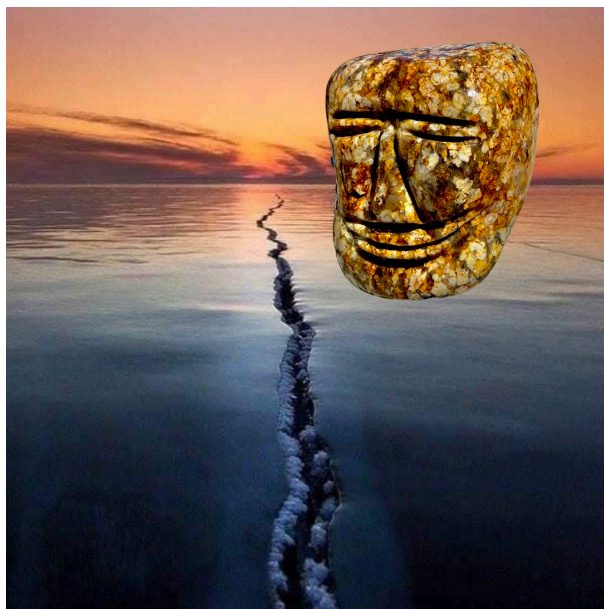
Integrating Wood and Stone



Sculpture Terrarium and water features

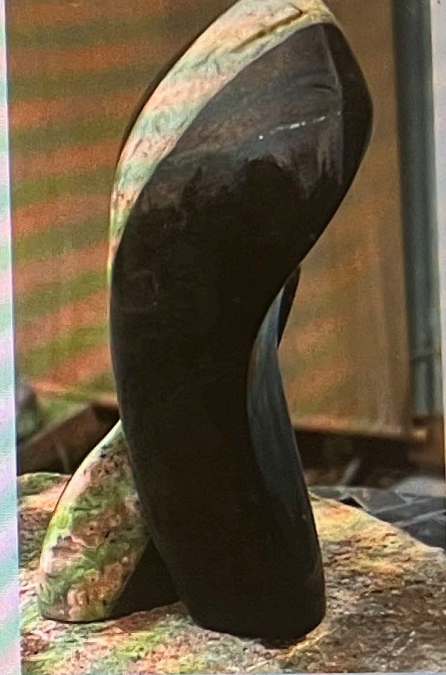


Playing with photography



Starting to do stained glass again



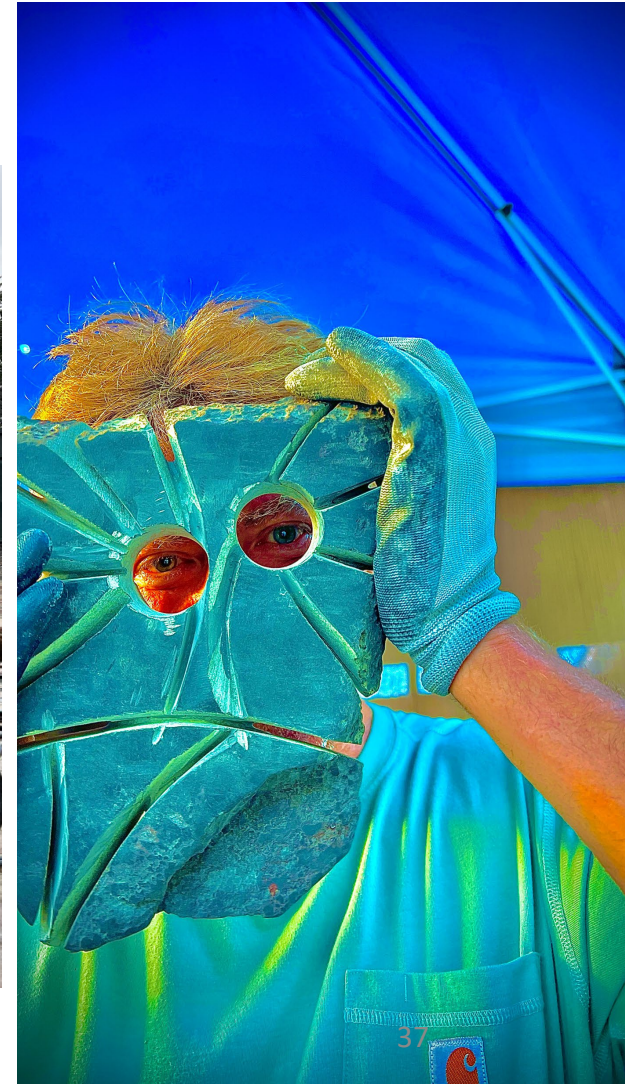


Camden Sculptures

Collin Camden White
camden5528@gmail.com
206-383-2842

Instagram: collin.white63 Facebook: [collin white](#)

The End

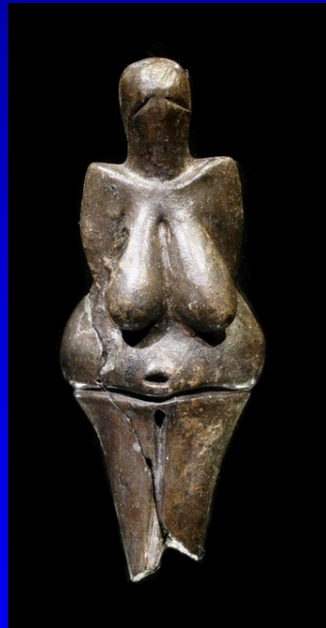


Working with Clay

**Josh Benditt, MD,
Pulmonary and Critical Care Medicine
UWMC, UW School of Medicine**

History of Ceramics/Clay

- One of the very oldest human creative activities.



Dolni Vestunice
Central Europe ~ 26,000 BC



Jomon vessel
Japan 2,500 BC

MEDITATION

Art as Meditation: How Pottery Can Strengthen Your Mind-Body Connection

Meditation

Creativity

Inspiration

Mindful Awareness

chopra.com

How I started in pottery

- High school classes.
 - Taught by potters who did their work in the studio.
- Open studio hours
- One class in college which nearly stopped my interest
- Did summer workshops
- Made pieces during medical school
 - Fund raiser for Pioneer Square Adolescent Clinic 1982

Since that time

- I have always had a bag of clay at home even when I did not have a garage studio
- Fired pieces at local studios.
- Faculty position UW Medical School 1994
 - Finally owned a house.
 - Set up the first of several “garage studios”

Why Medicine and Ceramics

- Fun !
- Stress relief
 - Balancing ICU work with its associated stressors
- Balance the brain
 - ICU - L brain
 - Pottery - R brain
- For many years I have counseled trainees to do R brain activities that they can do at home
 - Art of any kind, Music, wood shop, etc.

Anatomic beer mugs









What I do with my pieces

- **Pre-COVID**
 - Biannual fund raisers for Doctors without Borders and Northwest Assisted Breathing Center at UW
- **Gifts UWMC for display**
- **Gifts for friends**



Gifts for friends



How to get started with clay in Seattle (we are lucky!)

Studios with lessons:

Seward Park Clay Studio, 5900 Lake Washington Blvd S · In Seward Park,

Pottery Northwest Lower Level, 220 3rd Ave S

Rain City Clay, 4208 SW 100th St

Seatown Pottery 1900 E Aloha St

Rat City Studios 2410 SW 106th S

Ballard Clay Entrance is on alley not, 3423 NW

Wet Clay Café, 1109 N 35th St Suite A

Many more available

How to get started with clay in Seattle (we are lucky!)

Clay Supply Stores:

Seattle Pottery Supply
35 S Hanford St, Seattle

Tacoma Clay Art Center
2636 Pioneer Way E, Tacoma